

WALLSTAT MANUAL OVERRIDE OPERATION MANUAL

WALLSTAT MANUAL OVERRIDE

Introduction

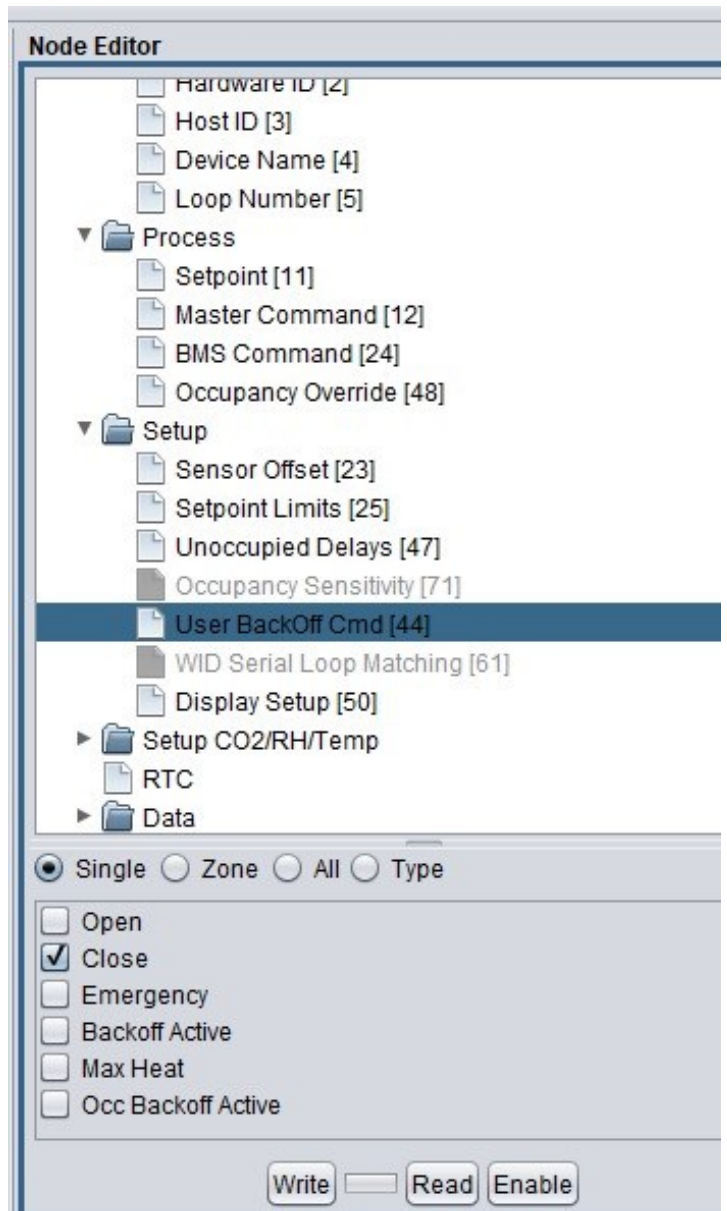
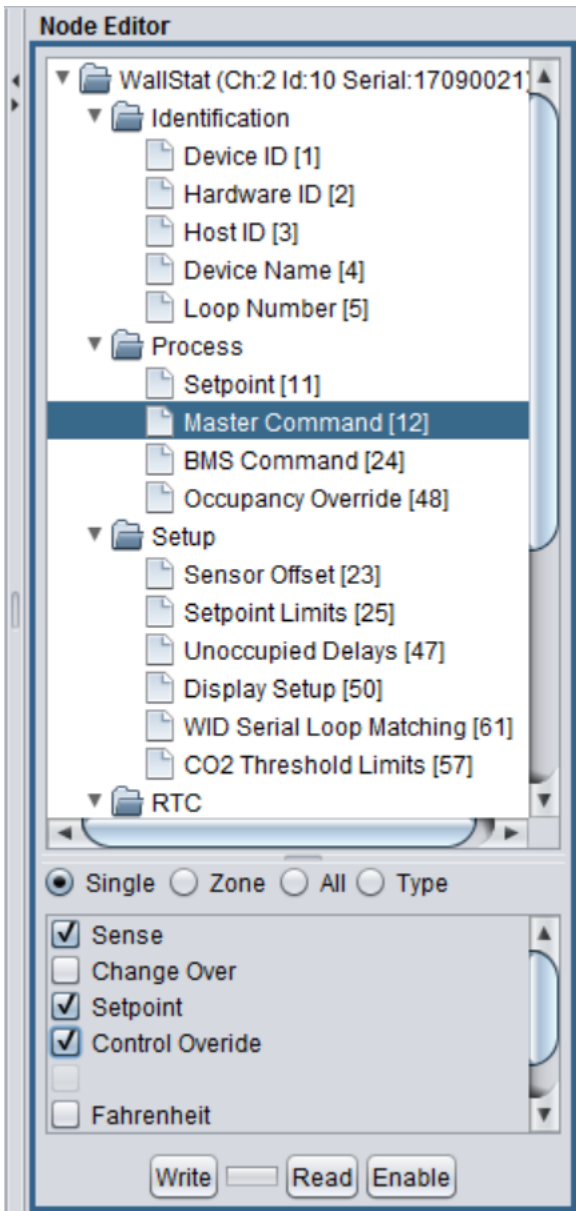
It is possible to manually override a diffusers operation using the MLM Wall Thermostat. One of the following override functions is possible i.e. Open, Close, Emergency, Emergency + Open, Emergency + Close, Backoff Active, Max Heat and Occupancy Backoff Active. Before this is possible, the Thermostat needs to be setup correctly, using the MLM application.

Setup

Open the MLM application, connect to your installation and on the *Network* tab, identify your Wall Thermostat ID number, then click on the Wall Thermostat icon that you want to give override functionality to. In the Node Editor bar on the far right of the screen, select **Process** and then **Master Command** (*node 12*). Tick *Control Override* and click the "Write" button to execute the command. Be sure to select the *Single* option if you only want that Wall Stat to be set. In the same menu select **Setup** and then **User BackOff Cmd** (*node 44*).

Tick the override function required (from the 6 listed options at the bottom of the node editor), and click the "Write" button to execute. Again, be careful to enable the *Single* option for the specific Wall Stat selected.

Please refer to the table below for a full list of diffuser functions available and their descriptions.



Function	Description
Open	Drive Diffuser Open to pre-set limit position, heater off
Close	Drive Diffuser Close to pre-set limit position, heater off
Emergency	Emergency, this command will disable the heater output
Emergency + Open	Disable heater output and drive diffuser completely open
Emergency + Close	Disable heater output and drive diffuser completely closed
Backoff Active	Activate Work Hours (WH) or After Hours (AH) dead band back-off control, whichever is
Max Heat	Drive diffuser to supply air maximum heat position and switch heater on 100%
Occ Backoff Active	Status flag to indicate the system is in unoccupied control mode

Once the Wall Thermostat is setup correctly, the override function selected can be activated through the Wall Thermostat.

Operation

To activate the function, press the enter button on the Wall Thermostat for a few seconds until the buzzer sounds. The diffuser will enter manual override mode and will move to the desired position and enable or disable the heater. To exit this function and return the diffuser to normal operation, press the enter button for a few seconds until the buzzer sounds again.