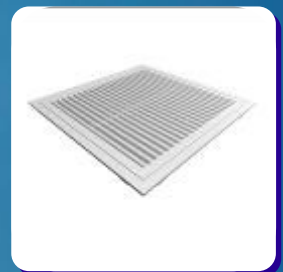


# RETURN AIR CURVED VANE GRILLE RCV / RRCV

25

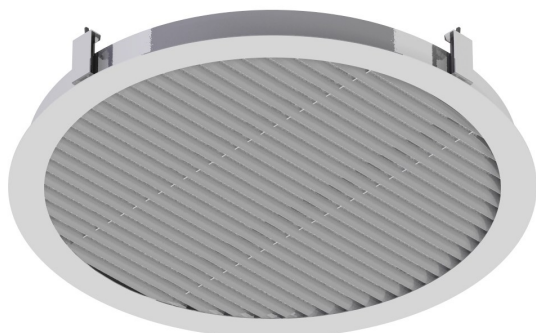
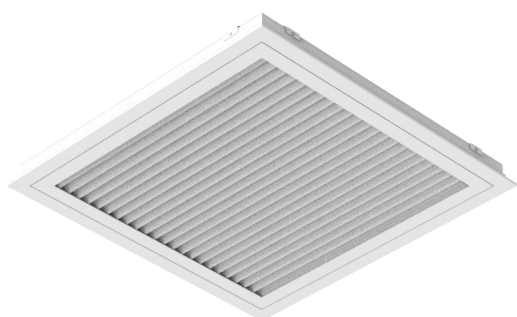
-  LOW PRESSURE LOSS
-  SECURE LATCH TO ACCESS FILTER
-  OBD's AVAILABLE
-  EX-STOCK IN STD COLOUR & SIZES
-  LARGE RANGE OF FINISHES
-  GRILLE & DIFFUSER FINISHES MATCH
-  EXCELLENT VALUE



## FEATURES

Rickard Air Diffusion offers a wide range of Return Air Grille types to suit most architectural requirements. Our most popular version the Curved Vane Return Air Grille or RCV is available in round or square. The RCV has been designed to limit the view into the ceiling from below. It can be ordered with an Opposed Blade Damper for balancing purposes or with filters that are accessible through a hinged panel (HF).

The washable filters are designed with a sturdy latch mechanism to securely fasten the hinged access panel into its frame. Unlike clip-in types, no force is required to clip the face back into place. This prevents the grille from being forced out of the ceiling grid when closing. Velcro Strips prevent the filter material from falling out when opening the hinged access panel.



**LOW PRESSURE LOSS**

**LATCHABLE HINGED PANEL FOR FILTER ACCESS**

**OBD's AVAILABLE**

**PLENUMS AVAILABLE**

**EX-STOCK IN STANDARD SIZES & COLOUR (595x595 & 1195x595mm)**

**LARGE RANGE OF COATED & ANODISED FINISHES AVAILABLE**

**GRILLE AND DIFFUSER FINISHES MATCH PERFECTLY**

**EXCELLENT VALUE**

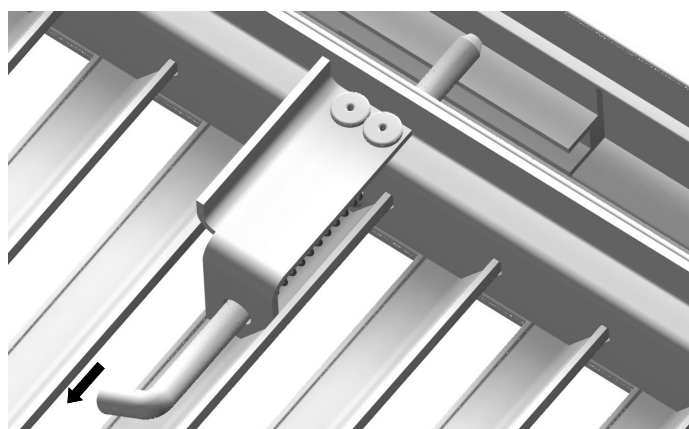
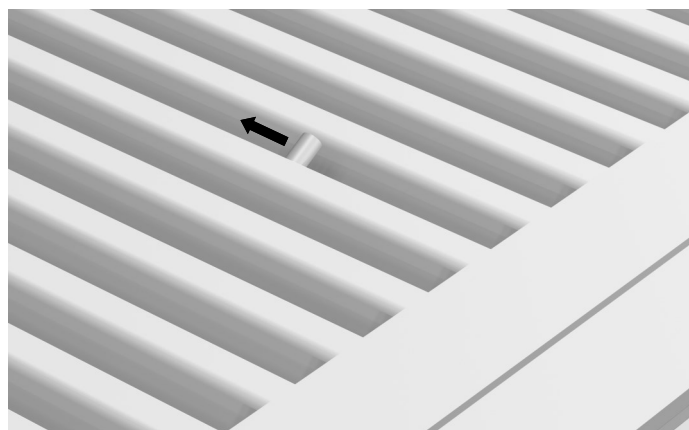
## APPLICATION

The RCV is available with or without plenums for ducted or ceiling return air respectively. Hinged RCV's fitted with removable and washable filter media are available to limit dust contamination of the return air.

## OPERATION

RCV's fitted with washable filters are designed with a sturdy latch mechanism to securely fasten the hinged access panel into its frame. Velcro Strips prevent the filter material from falling out when opening the hinged access panel.

Round Return Air Grilles (RRCV) do not have the hinged filter option. If access is required, a T-ring can be used for access to.



## SELECTION

Please see the selection tables at the end of this section. The pressure drop and performance in l/s is tabled. Non-standard size performance can also be calculated using the included formulae.

**TYPES**

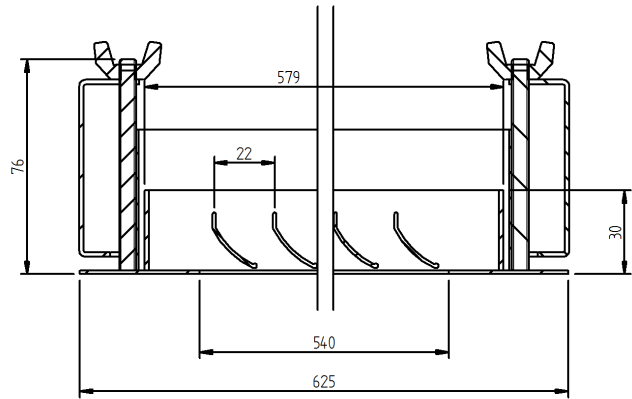
The following RCV options are available:

Type	600 x 600	600 x 1200	Special Sizes	Filter	Hinge Filter	With OBD	Std Colour	Special Colour	Anodised	Plenum
RCV	Yes	Yes	Yes	Yes	Yes	Yes	White	Yes	Yes	Yes
RCCV	No	No	Yes	No	No	No	White	Yes	Yes	Yes

OBD (optional add on)



RCCV

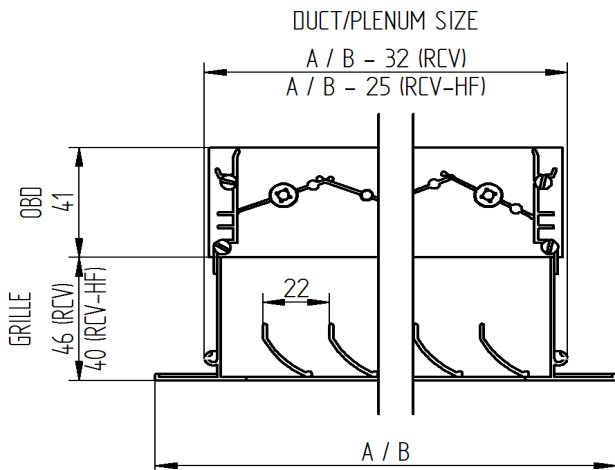


**DIMENSIONS**

Standard sizes are designed to fit a 600x600mm and 600x1200mm ceiling grid. Special sizes are available on request.

RCV		
NOMINAL SIZE	A	B
1200 x 600	1195	595
600 x 600	595	595
600 x 300	595	295
1000 x 500	995	495
500 x 500	495	495
500 x 250	495	245

RCV, RCV-OBD, RCV-HF, RCV-HF-OBD



TYPE	NOMINAL SIZE mm	FLOW [l/s]							
		RESISTANCE (Pa) DROP-IN				RESISTANCE (Pa) DUCT MOUNTED			
		5	10	15	20	5	10	15	20
RCV with/without OBD	495 x 495	219	310	380	438	242	342	419	484
	495 x 995	441	623	763	881	474	671	822	949
	595 x 595	317	448	548	633	344	486	596	688
	595 x 1195	636	899	1102	1272	677	957	1172	1353
RRCV	R580	253	357	437	505	274	388	475	549
RCV (Filter)	495 x 495	104	147	180	208	115	162	199	230
	495 x 995	209	296	362	419	270	381	467	539
	595 x 595	150	213	261	301	163	231	283	327
	595 x 1195	302	427	523	604	321	454	557	643

To calculate the Volume Flow rate in l/s at a specific desired pressure drop for sizes not listed please use the following formula

$$Q = a \times \sqrt{P} \times (H + b + c) \times (W + b + c)$$

a	0.0004	No filter
	0.00019	Filter
b	0	RCV
	-52	RSV
c	25	Duct Mounted
	0	Drop-In
P	-	Pressure
H	-	Height
W	-	Width