





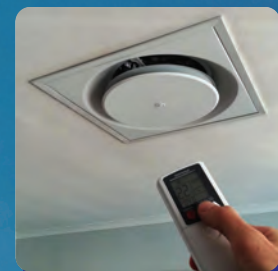


# MLM INFRARED REMOTE SET POINT ADJUSTER

16

-  INDIVIDUAL TEMPERATURE CONTROL
-  ENERGY SAVING
-  CONTROL AN ENTIRE ZONE
-  IMPROVED PRODUCTIVITY
-  IMPROVED JOB SATISFACTION
-  PLUG AND PLAY CONVERSION



## FEATURES

Individual Temperature Control and Energy Saving is becoming more and more important in today's modern buildings. Giving the occupant control over his or her environment can improve productivity and job satisfaction. For this reason Rickard has introduced Infrared Remote Temperature Adjustment to give the occupant control over his or her environment.

This functionality can be activated by plugging a single Infrared onboard controller into the diffuser controller board fitted to the trim plate of a diffuser. The Infrared Remote Adjuster allows the occupant to control the zones temperature and turn off the temperature control. Turning off the temperature effectively closes the diffuser, thereby limiting the conditioned air into the zone and in turn saves energy. Energy is saved since the a VAV diffuser system is pressure dependent. When a diffuser closes, the fan can supply less air since the pressure in the system is being maintained at a constant level by the fan.

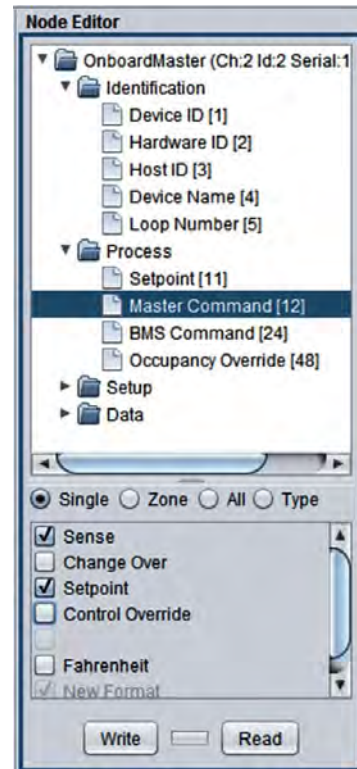
### INDIVIDUAL TEMPERATURE CONTROL

### ENERGY SAVING

### CONTROL AN ENTIRE ZONE

### IMPROVED PRODUCTIVITY AND JOB SATISFACTION

### PLUG AND PLAY CONVERSION



- Create a zone. Link slave diffusers to the Master diffuser (diffuser with IR onboard controller fitted) using the MLM application. See MLM Commissioning Guide in the MLM Controls section at [www.rickardair.com](http://www.rickardair.com).

### INCREASE TEMPERATURE

To adjust the temperature set point higher, point the IR Remote at the diffuser and press the up arrow. If a beep is heard from the diffuser the set point displayed on the remote will be written to the diffuser. Set points higher than the set point limit will not be written to the diffuser.

### DECREASE TEMPERATURE

To adjust the temperature set point lower, point the IR Remote at the diffuser and press the down arrow. If a beep is heard from the diffuser the set point displayed on the remote will be written to the diffuser. Set points lower than the set point limit will not be written to the diffuser.

### TURN OFF TEMPERATURE CONTROL & ACTIVE ENERGY SAVING MODE

To deactivate temperature control and activate energy saving mode. Point the IR Remote at the diffuser and press the red button. If a beep is heard from the diffuser the display on the remote will turn off and the diffuser will close so that it saves system fan energy and stops controlling room temperature. If the temperature deviates from setpoint by more than the back off band value, the diffuser will drive to the minimum position to prevent further temperature drift.

### TURN ON TEMPERATURE CONTROL

To activate temperature control. Point the IR Remote at the diffuser and press the red button. If a beep is heard from the diffuser the display on the remote will turn on and the diffuser will start to control room temperature.

### NOTE:

The diffuser must beep for the remote to set the diffuser. If the value on the IR remote changes but the diffuser does not beep then the signal did not reach the diffuser. Point the IR remote directly at the diffuser to adjust.

## APPLICATIONS

Where Individual Control is needed.

Where fitting a wired wall thermostat is not practical.

Simple management for a Facilities Management Team.

## OPERATION

Before operation ensure the following:

- Ensure the IR remotes display is on (replace batteries if necessary)
- Ensure the IR remote has been set to Model 40 (see instructions on the rear of the remote)
- Plug an Infrared Onboard Controller into the Diffuser Controller on the Trim plate of the Diffuser. The controller senses temperature and receives the signal from the remote.
- Activate Sense and Set point on the Node Editor of the IR Onboard Controller on the MLM Application (See diagram below)